

Developers and Local
Councils – Victoria

Pipelines Factsheet

General Information

Pipelines are an important part of Viva Energy's energy supply chain in Victoria. The primary purpose of these pipelines is to transport fuel, crude oil and gas safely, reliably and efficiently.

Viva Energy operates and maintains a number of high pressure licensed pipelines in Victoria. These pipelines transport either crude oil or refined petroleum products like diesel, LPG, petrol, or aviation fuels. Viva Energy supplies around half of Victoria's liquid fuel requirements. Pipelines are regulated under the Pipelines Act (2005) and are constructed, operated and maintained in accordance with Australian Standard (AS2885). Licensed pipelines in Victoria are regulated by Energy Safe Victoria (ESV).

Pipeline easements and corridors

Viva Energy's pipelines are laid through pipeline corridors, usually within easements. These easements are located on a variety of land uses that range from private land to parks, rural land, roadways, railways and businesses to name a few. Pipelines are referenced (registered) on land titles as either easements or licenses for Crown land, rail and road.

In order for Viva Energy to fulfil its Pipeline Licence requirements and/or undertake maintenance works, access is required to its pipelines on a regular or ad hoc basis.

Potential development near pipelines

Planners and developers play a key role in identifying and locating pipelines early in the planning process to ensure that developers and contractors are aware of the associated requirements, risks and issues around pipeline protection and safety.

With an increasing amount of development in Victoria there is the potential for a development to be in close proximity to a pipeline.

There are many stakeholders involved during the development process including developers, land owners, responsible authorities, government, planning departments, neighbouring businesses and the community.



Pipeline Measurement Length

With density and population increases in Urban Growth corridors, the exclusion zones/measurement lengths/buffer areas around our pipelines, presents new challenges in our ability to control and mitigate risks, which necessitates the need for more interaction between planners, developers and pipeline operators.

For Viva Energy's high pressure pipelines, the measurement length ranges between 90m to 200m approx. either side of the pipeline depending on pipeline traits. The measurement length for each pipeline is calculated based on; pipeline diameter, what product the pipeline carries and the pressure.

Planning, development and pipelines

Viva Energy should be considered as a 'referral agency' to provide advice on developments in the vicinity of its pipelines, to ensure risk informed land use planning practices can be adopted. The responsible authority is the link between the pipeline owners and operators and the developers and planners. It is important that any planning, development or changes near the pipeline are advised to Viva Energy in the concept stages such that the work will not interfere with the pipeline and vice versa. With early consultation, future delays and costly resolutions can be avoided.

Sensitive Use Location Class

- The Sensitive use location class as per AS2885, identifies land classification where the consequences of a failure event may be increased. It is a location where there is a high concentration of people and the ability to protect themselves and evacuate is compromised.
- It is important that "Sensitive uses developments' are not placed within the measurement length, as there is the risk of a high consequence, or failure event which could have catastrophic impacts on the environment, economy and safety of the community. Sensitive uses include; Schools, Kindergartens, Childcare Centres, Hospitals, Aged Care Facilities and Prisons.

Important information for developers

There are constraints with respect to the use of the land on and near pipelines. In addition to complying with the requirements set out in AS2885, Viva Energy may require that anyone who proposes to carry out works in the vicinity of its pipelines:

- a. Grants an easement to Viva Energy which contains provisions to ensure that the pipeline will be adequately protected both during and after the development and that Viva Energy will continue to have rights to access the pipeline for routine or ad hoc maintenance and inspections; and/or
- b. Enter into an agreement with Viva Energy in relation to the proposed development, which may include indemnities by the authority or developer in respect of any damage to the pipelines arising from the development and provision for recovery of Viva Energy costs in relation to any works which it is required to carry out to protect the pipeline prior to the development proceeding.

The work Viva Energy may need to undertake could involve additional protection of the pipeline. The cost of this work will be borne by the developer.



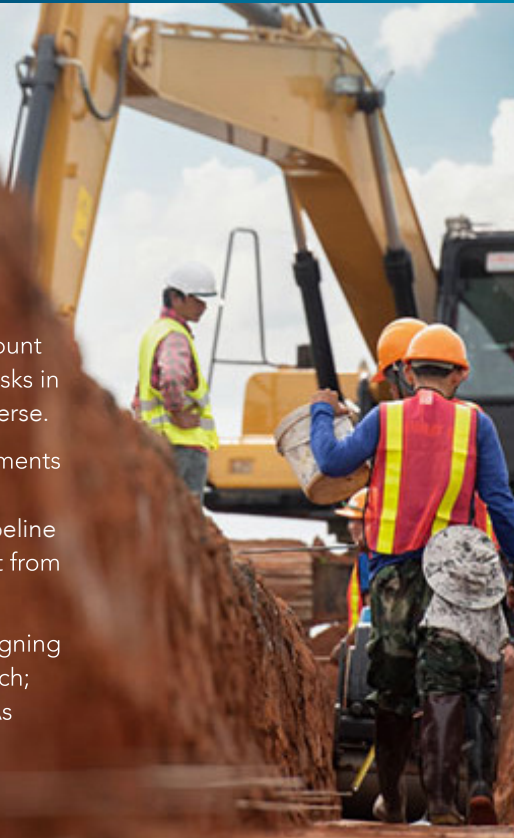
Pipelines design

AS2885 is the national best practice standard for the design and operation of high pressure, steel pipelines.

In general, pipelines are designed to take into account the known and proposed land uses and the likely risks in the range of environments through which they traverse.

For example, the risks that rural and urban environments present to a pipeline are different, and the consequences of an incident to a high pressure pipeline in a rural environment may be significantly different from a similar incident in an urban environment.

A key safety principle of risk assessment when designing pipelines for all environments is the ALARP approach; that is, that all risks to the pipeline are to be kept As Low As Reasonably Practicable (ALARP).



Planning on developing or redeveloping land?

Viva Energy can provide advice during the planning process for high consequence area developments, to ensure that risk-informed land use planning practices can be adopted.

This is particularly important in mitigating potential risks and addressing any encroachment matters with proposed solutions to benefit both the integrity of the pipeline and the community.

The risks associated with land use changes must be managed to the requirements of the Australian Standards. Early consultation is very important.

Where development is being considered for an area which contains a pipeline, it is essential that the development proponents ask the following questions and follow these steps:

- ? Are you considering developing land?
- ? Does the land have an easement with a pipeline?
- ? Complete a 'BYDA' request. Is there a Viva Energy pipeline registered?

Please contact Viva Energy to discuss how we can assist in the early stages of planning



Zero Damage - Zero Harm

Before You Dig

For your own safety and of the public, it is absolutely essential that you check **"Before You Dig Australia"** before undertaking any work anywhere near the easement that breaks the surface of the ground, including digging, ploughing, installing fence posts, boring or excavating.

This also applies to any contractors that may be working on your property. **"Before You Dig Australia"** is a national referral service. It provides free advice about the location of any underground pipes and cables, along with information on how to work safely and carefully whilst excavating in the vicinity of underground assets.

 www.byda.com.au



How to contact us

If you have any other questions about pipelines, please contact:

Viva Energy Pipelines Team

-  1800 945 223
-  www.byda.com.au
-  www.vivaenergy.com.au

24hr Emergency numbers

- Pipelines: 1800 809 691
- W.A.G. Pipeline: 1800 650 523
- Lara LPG Pipeline: 03 5275 2500

