

Community Information

Maintenance works on Pipelines – Victoria

General information

Pipelines are an important part of the energy supply chain in Victoria. The primary purpose of these pipelines is to transport gas, crude oil or fuel safely, reliably and efficiently.

Viva Energy operates and maintains a number of high pressure licensed pipelines in Victoria. These pipelines transport either crude oil, or refined petroleum products like diesel, LPG, petrol, or aviation fuels.

Pipelines are regulated under the *Pipelines Act (2005)* and are constructed, operated and maintained in accordance with Australian Standard (AS2885).

Licensed pipelines in Victoria are regulated by Energy Safe Victoria (ESV).

Pipelines and easements

Pipelines traverse through what are known as pipeline corridors, usually within easements. These easements are located on private and public land, parks, rural land, roadways, road verges and businesses to name a few.

In order to undertake maintenance works, access is required to pipelines and in many cases, to the land that they traverse as well as adjacent land areas.

There are various constraints that are applied to pipeline corridors and easements to ensure access to a pipeline is maintained. For example, buildings are prevented, vegetation and addition of fill is restricted, power and telegraph poles, fencing and agricultural activities are controlled.



Maintenance and inspection activities on a section of a pipeline.

Pipeline maintenance

Viva Energy's pipelines are designed, constructed, operated and maintained in accordance with, AS2885 to ensure the integrity of the pipelines and safety of the community.

As part of this standard, Viva Energy has developed a Pipeline Integrity Management Plan. This plan ensures the continued integrity, monitoring and safe operation of the pipelines.

Under this plan, there is a robust inspection and maintenance program.

There are many parties involved when maintenance is required to be performed on a pipeline; including land owners, regulatory authorities (ESV), local councils, other underground asset and pipeline owners and the community.



Pipeline easement in rural land.

What is typically involved prior to pipeline maintenance works?

We aim to undertake our works as safely and quickly as possible and are mindful that our works may impact the community. In the lead up to maintenance works, careful and detailed planning takes place including:

Site visit

A Viva Energy Pipelines Engineer will visit the works area and surrounds so that access to the pipeline and any potential impact to the community is better understood. It is better to discuss these matters early so that each party can plan ahead of the works.

Site condition & building survey

Depending on the nature and extent of the maintenance works that may be required and the proximity of buildings or other fixed structures to the works area, a site condition and building survey may need to be undertaken prior to the commencement of the works. The survey examines and records the nearby site and structural conditions and is performed by a qualified Structural Engineer.

During this time, an inspection and accompanying photographic record of the condition of the site will be completed. A photographic camera is used to record this information. A survey is also performed once the maintenance works have been completed.

Dial Before You Dig requirements

Where works break the surface of the ground, there is a requirement under the pipelines standard AS2885 as well as Dial Before You Dig to verify the presence of all underground assets, including pipelines.

During this activity, representatives from asset owners attend the site. It should also be noted that we may be required to mark the ground with temporary paint to assist in identifying the assets.



Marking the ground with temporary paint

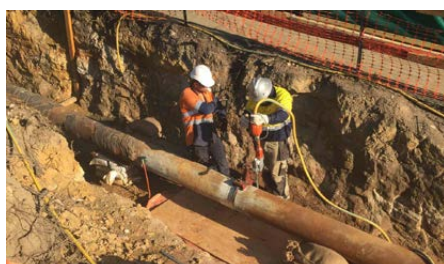
What is involved during maintenance works?

Undertaking maintenance works on a pipeline is like any other works zone - it involves the use of machinery and excavations which can take some time to complete with lots of movements by our contractors.

Depending on the preventative maintenance required, the length and duration of maintenance works and the use of associated equipment varies.

The use of the type of equipment also depends on each phase of works such as excavation and soil removal, pipeline maintenance and coating, pipeline sandblasting, pipeline testing and backfilling and any reinstatement works. In some cases, works may also involve the removal of materials containing asbestos.

Equipment that may be used during these activities includes excavators, jack hammers, trucks, cranes and suction trucks. These works are completed in accordance with AS2885.



Typical work zones during pipeline maintenance works

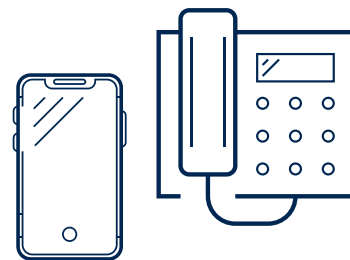
Important things to note about timing of the works



The full condition of the pipeline is verified once it is excavated

The time required to complete works varies and can range from weeks to several months. This is because of a number of reasons:

- inclement weather (including heavy rainfall) can affect the timeline of works. If the works area becomes flooded, water needs to be drained and disposed in accordance with regulatory requirements.
- the full condition of the pipeline is verified once it is excavated and inspected and further repair works may be required to take place.
- more complex repairs may involve manufacturing specialised parts/ equipment which can result in long lead times.
- some works may require a shutdown of the pipeline to ensure supply to fuel terminals is maintained which requires careful and detailed planning.



How to contact us

If you have any other questions about pipelines, please contact:

Viva Energy Pipelines Team

t : 1800 945 223

e : dbydvic@vivaenergy.com.au

w : vivaenergy.com.au