

Community Information

Victorian Pipelines and Easements

General information

Pipelines are an important part of Viva Energy's energy supply chain in Victoria. The primary purpose of these pipelines is to transport gas, crude oil or fuel safely, reliably and efficiently.

Viva Energy operates and maintains a number of high pressure licensed pipelines in Victoria. These pipelines contain either crude oil, or refined petroleum products like diesel, LPG, petrol, or aviation fuel.

Pipelines are regulated under the Pipelines Act (2005) and are constructed, operated and maintained in accordance with Australian Standard AS2885. Licensed pipelines in Victoria are regulated by Energy Safe Victoria (ESV).

Pipelines and easements

Pipelines traverse through what are known as pipeline corridors, usually within easements. These easements are located on private and public land, parks, rural land, roadways, road verges and businesses to name a few.

The easement width varies along the route of the pipelines. It should be noted the pipeline is not necessarily located centrally and can be anywhere within the easement.

Pipeline warning signs are strategically placed along the pipeline route within the vicinity of the pipeline to warn the community that there are pipelines in the area. They do not give the exact location of the pipeline.



Pipeline easement marked by warning signs.



Maintenance works being carried out on a pipeline.

What you need to know

The carrying of hazardous liquids through pipelines at high pressure is an activity that requires potential risks to the environment and public safety to be strictly managed.

There are various constraints that are applied to pipeline corridors and easements. This is important so that:

- access is maintained in order to undertake inspection and/or maintenance works to maintain security and safe operation of the pipeline;
- land use planning, development and subdivision of land does not jeopardise the integrity of the pipeline and the safety of the public and the environment;
- the general public take into account the presence of the pipeline in their intended activities so that they do not cause damage to the pipeline.

Your role is important

As there is a high pressure pipeline on or near your property, please assist us to protect the pipeline by:

- informing us of any activity you observe on or near the pipeline routes;
- call us immediately if you observe a pool of liquid, discoloured vegetation or notice any unusual odour;
- informing us if you observe or are planning on undertaking any activities that are considered as constraints to the pipeline;
- if you have any concerns related to the pipeline.

Important constraints near pipeline easements

Without prior written consent you must not do any of the following on or near the easement:

- plant or permit planting of any trees or shrubs;
- add fill (soil) material;
- erect any structure, foundation, pavement, pipeline, services (including power and telegraph poles) or other improvements;
- store flammable or explosive materials;
- use or permit use of any explosive materials;
- alter or permit to be altered (other than by nature) the grade and contours;
- install fixed plant, equipment, materials or facilities;
- dig or plough.

It is important to note that the depth of the pipeline below ground varies.

If you plan on undertaking any of these activities, please contact "Dial Before You Dig" immediately. If you have any questions, please contact Viva Energy.



Tree removal works in progress ahead of pipeline maintenance works.

What am I allowed to do on the easement?

In general, you may continue to use the easement land so long as that use does not interfere with the Viva Energy's right to operate and maintain its pipeline.

If the use may interfere with that right then you need prior written consent.

Dial Before You Dig

For your own safety and of the public, it is absolutely essential that you "**Dial Before You Dig**" before undertaking any work anywhere near the easement that breaks the surface of the ground, including digging, ploughing, installing fence posts, boring or excavating.

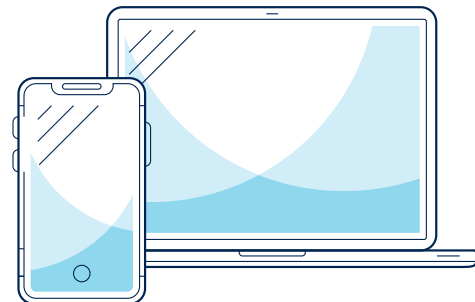
This also applies to any contractors that may be working on your property. Dial Before You Dig is a national referral service. It provides free advice about the location of any underground pipes and cables, along with information on how to work safely and carefully whilst excavating in the vicinity of underground assets.

How to contact Dial Before You Dig



W: 1100.com.au

T: 1100 (from anywhere in Australia)



How to contact us

If you have any other questions about pipelines, please contact:

Viva Energy Pipelines Team

t : 1800 945 223

e : dbydvic@vivaenergy.com.au

w : vivaenergy.com.au