



## Your role is important

As there is a high pressure pipeline on or near your property, please assist us to protect the pipeline by:

- informing us of any activity you observe on or near the pipeline routes;
- call us immediately if you observe a pool of liquid, discoloured vegetation or notice any unusual odour;
- informing us if you observe or are planning on undertaking any activities that are considered as constraints to the pipeline;
- if you have any concerns related to the pipeline.

## Important constraints near pipeline easements

Without prior written consent you must not do any of the following on or near the easement:

- plant or permit planting of any trees or shrubs;
- add fill (soil) material;
- erect any structure, foundation, pavement, pipeline, services (including power and telegraph poles) or other improvements;
- store flammable or explosive materials;
- alter or permit to be altered (other than by nature) the grade and contours;
- install fixed plant, equipment, materials or facilities;
- dig or plough.

It is important to note that the depth of the pipeline below ground varies.

If you plan on undertaking any of these activities, please contact "Dial Before You Dig" immediately. If you have any questions, please contact Viva Energy.



Tree removal works in progress ahead of pipeline maintenance works.

## What am I allowed to do on the easement?

In general, you may continue to use the easement land so long as that use does not interfere with the Viva Energy's right to operate and maintain its pipeline. If the use may interfere with that right then you need prior written consent.

## Dial Before You Dig

For your own safety and of the public, it is absolutely essential that you "**Dial Before You Dig**" before undertaking any work anywhere near the easement that breaks the surface of the ground, including digging, ploughing, installing fence posts, boring or excavating.

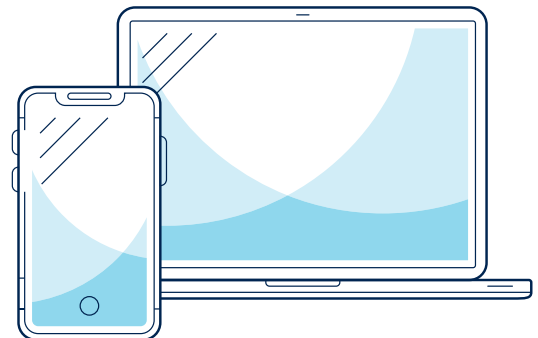
This also applies to any contractors that may be working on your property. Dial Before You Dig is a national referral service. It provides free advice about the location of any underground pipes and cables, along with information on how to work safely and carefully whilst excavating in the vicinity of underground assets.

## How to contact Dial Before You Dig



W: 1100.com.au

T: 1100 (from anywhere in Australia)



## How to contact us

If you have any other questions about pipelines, please contact:

Viva Energy Pipelines Team

t : 1800 945 223

e : [dbydnsw@vivaenergy.com.au](mailto:dbydnsw@vivaenergy.com.au)

w : [vivaenergy.com.au](http://vivaenergy.com.au)