

## COMMUNITY WRAP-UP

# Newport Terminal Newsletter

Welcome to our annual community newsletter which provides an overview of what has been happening at Newport Terminal and Viva Energy over the year.

We are always keen to receive your feedback so please refer to our Contact Us section.

You can also find out more on our website [vivaenergy.com.au](http://vivaenergy.com.au)

## New Jet Fuel Tank



We have now commissioned the newly constructed 8 million litre jet fuel storage tank at Newport Terminal.

This new jet fuel tank forms part of our long-term plans for the ongoing safe and reliable supply of jet fuel to Melbourne Airport and our aviation customers.

As Australia's second largest airport, annual passenger numbers for Melbourne Airport are expected to almost double by 2038. Viva Energy is a major supplier to Melbourne and Avalon Airports and each year refuels over 70,000 planes in Victoria.



## Season's Greetings

From everyone at our Newport Terminal we wish you and your loved ones a safe festive season.

## Safe Load Program promoted at 2019 Bulk Tanker Day



In September, Viva Energy's experts talked about upcoming changes to the Australian Standards AS2809 at the 2019 Bulk Tanker Day forum.

The changes, which will be introduced next year, will impact new truck equipment manufactured after the implementation date.

These changes aim to streamline existing standards as well as enhance the safety of fuel tankers.

Newport Terminal is one of Victoria's primary fuel distribution centres and vehicle filling gantries form a large part of its operations.

Viva Energy Australia is a joint venture partner in the Safe Load Program and supports this progress, which is expected to deliver increased safety outcomes for the industry.

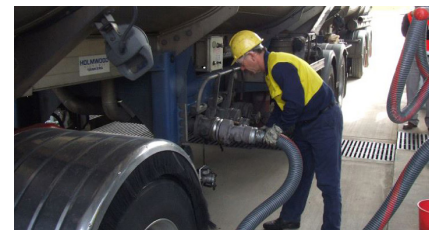
You can find out more information on the Safe Load program at [safeloadprogram.com.au](http://safeloadprogram.com.au)

## Biodiesel blended at Newport Terminal

In August, as a partner of Just Biodiesel, we were invited to the launch of their facility in north-east Victoria.

With a capacity to manufacture 55 million litres of biodiesel annually, Viva Energy blends biodiesel from the facility at its Newport Terminal and delivers it to customers.

Biodiesel is made from a diverse range of feedstocks including used cooking oil and tallow.



Biodiesel blends must meet strict technical fuel quality and engine performance specifications and is most often blended up to 5 percent (B5) or 20 percent (B20) biodiesel.

## Innovation in preventing tank corrosion



Viva Energy has developed a Risk Based Inspection (RBI) tool to determine how much time can elapse before a tank needs to be removed from service for an internal inspection. The RBI tool factors in a wide range of data, including the expected rate of corrosion.

However, when water gets under the tank floor, actual corrosion can occur at a different rate than predicted. To address the issue, Viva Energy's engineers developed a weather strip design in 2008 to eliminate water getting under tank floors.

Today, all new tanks are constructed with the weather strip and existing operational tanks are retrofitted where it is practical to do so. Eventually, all Viva Energy's vertical storage tanks will be protected by the weather strip. In fact, the weather strip has been adopted by other companies globally, which is a great recognition for our talented local team.

## Celebrating Safety Week

October marked National Safe Work Month and Viva Energy held its annual Safety Day to mark its own commitment to a safe workplace.



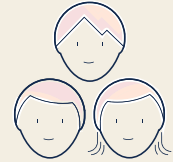
This year's theme, 'Know your Risks, Be in Control' saw our employees and contractors at Newport Terminal talk about why safety is important and the part that each and every one of us has to play - every day - in understanding risks and being in control.

If you are driving during the busy festive season here are some tips on staying safe [vivaenergy.com.au/driven/connection/10-tips-for-safer-driving](http://vivaenergy.com.au/driven/connection/10-tips-for-safer-driving)

### Contact Us

Website: [vivaenergy.com.au/operations/newport](http://vivaenergy.com.au/operations/newport)  
Email: [communityrelations@vivaenergy.com.au](mailto:communityrelations@vivaenergy.com.au)  
Newport Terminal 24 hour line  
(including operational issues): **1800 651 818**  
Emergencies: **000**

## Upcoming Community Meeting



You are invited to join us at the upcoming Community Liaison Group Meeting

**Date:** Thursday 5 December 2019  
**Time:** 5.30pm – 7.00pm  
**Venue:** Newport Terminal (off Douglas Parade, near Digman Reserve)

Light refreshments will be provided from 5.15pm for a 5.30pm start.

We also invite the community to attend an optional Annual Site Odour Review starting at 4.30pm on the same day.

You can let us know if you will be attending via: [communityrelations@vivaenergy.com.au](mailto:communityrelations@vivaenergy.com.au) or phone: **03 8823 4677**

## Newport Terminal Alarms

The alarms at Newport Terminal are a vital way to ensure that our people on-site respond quickly and safely to an incident.



The alarms are tested at 1.30pm every Thursday.

### General Alarm

30 seconds of an alarm with an alternating pitch. In the event of an actual incident, the general alarm will sound for at least one minute or more.

### All Clear

30 seconds of continuous sounding of the siren. This signifies that an incident that has occurred is now under control.

An alarm heard any other time from the testing on Thursday means an incident has occurred on site that requires attention by terminal personnel.

The community does not need to take action when an alarm sounds unless instructed otherwise by the Police or Emergency Services.

We offer local residents free fridge magnets with information about our alarms. If you would like one, please email us at [communityrelations@vivaenergy.com.au](mailto:communityrelations@vivaenergy.com.au) and don't forget to include your name and postal address.