

Clyde Terminal Community Update

Clyde Terminal Conversion and Remediation of the Western Area



Clyde Terminal Conversion Project

Viva Energy received development consent in 2015 to carry out works for the conversion of the former Clyde Refinery into a finished product bulk import and storage terminal (Clyde Terminal Conversion Project).

Since then, Viva Energy has undertaken decommissioning, demolition and removal of the majority of redundant refinery infrastructure as well as construction and modification of assets so that ongoing operations can be consolidated into a smaller area.

The remaining demolition works are planned to continue in 2019.

You can read more information about the Clyde Terminal Conversion Project at: vivaenergy.com.au/about-us/terminals-and-refinery/clyde/projects/conversion-project



Tanks at the Clyde Terminal, following conversion works.



About the Remediation works

As the conversion works near completion, a large part of the former refinery area in the south western part of the site (known as the 'Western Area') is no longer required for operational purposes.

The Western Area is approximately 40 hectares in land size and was previously used for refining operations including hydrocarbon processing, fuel storage and transfer.

Long-term and historical use has resulted in contamination impacts to the soils and groundwater.

The type of remediation involved would depend on the nature and extent of the contaminants found and would be across targeted areas of the Western Area.

A variety of remediation techniques are proposed to be used based on the nature and extent of the contamination present.

The remediation would be focused at shallow depths of the site. It is estimated that approximately 105,000m³ of soils will require remediation.

During this process, we are planning to reuse some of the waste material such as soil and crushed concrete as fill on site, after certifying it is fit for use.

You can read more information about the remediation works at: vivaenergy.com.au/about-us/terminals-and-refinery/clyde/western-area-remediation-project



Timing and Duration

Following approvals, the works are planned to be undertaken in stages over a three year period.

To manage our work and minimise any impact to the surrounding community and environment, a number of environmental management plans will be developed.

These plans will be developed in consultation with various regulators and government agencies and submitted to the Department, Planning and Environment (DP&E) for approval prior to the execution of the works.

Remediation of the Western Area

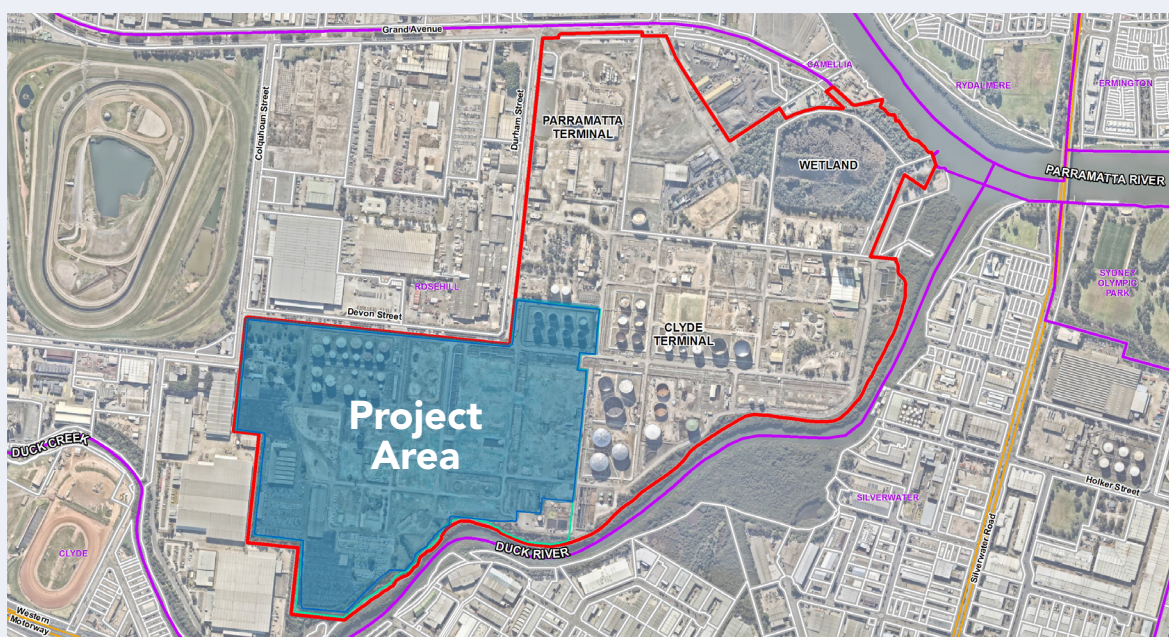
Following completion of the remaining demolition activities, Viva Energy intends to commence environmental remediation of the Western Area to ensure the site meets the current standards for Commercial/Industrial land use.

Viva Energy has received approval from the Department of Planning and Environment (DP&E) to have the environmental remediation works designated as a State Significant Development (SSD). The designation as a SSD involves a requirement to publicly exhibit the Environmental Impact Statement (EIS) which will contain details of the proposed works and their potential impacts to the environment and the surrounding community, and importantly, how Viva Energy proposes to manage these impacts should they occur.

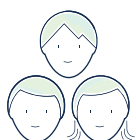
In order to commence work on the EIS, a Preliminary Environmental Assessment (PEA) was prepared by Viva Energy's environmental consultants (AECOM) which outlines potential impacts the works may have on the community and the environment.

Following receipt of the PEA, the DP&E received submissions from various government agencies which have been consolidated into the Secretary's Environmental Assessment Requirements (SEARs) for the project. Viva Energy's EIS submission is required to respond to, and address the matters raised by the SEARs.

You can view the Preliminary Environmental Assessment and the Secretary's Environmental Assessment Requirements on the Department of Planning & Environment's website: majorprojects.planning.nsw.gov.au/index.pl?action=view_job&job_id=9302



Location of Project area (in blue) that will undergo environmental remediation works. The Clyde and Parramatta Terminal are bound by the area in red.



Community Consultation

You can raise issues or concerns that you may want addressed as part of the EIS by contacting us via the details provided.

As part of the consultation process, we will also be hosting a Community Information Session in 2019 where you can learn more about the proposed works. We will send out invitations closer to the date. We will be posting updates on the project at vivaenergy.com.au/about-us/terminals-and-refinery/clyde/community



Contact

For more information or if you have any questions, contact us as follows:

Telephone: **02 9897 8046**

Email: Communityrelations@vivaenergy.com.au

Website: vivaenergy.com.au/about-us/terminals-and-refinery/clyde/community