

Clyde Terminal Community Update



Clyde Terminal Western Area Remediation Project (WARP)

We are providing an update on our progress on the environmental remediation works at the Western Area of the Clyde Terminal that we have been undertaking since October 2020.

Viva Energy received development consent from the Department of Planning, Industry and Environment (DPIE) in early May 2020 to undertake these works.

These works are part of plans to ensure this land meets the current standards for Commercial / Industrial land use. The works are being undertaken under a COVID Safe Plan and will be continually reviewed subject to Government advice and directions.

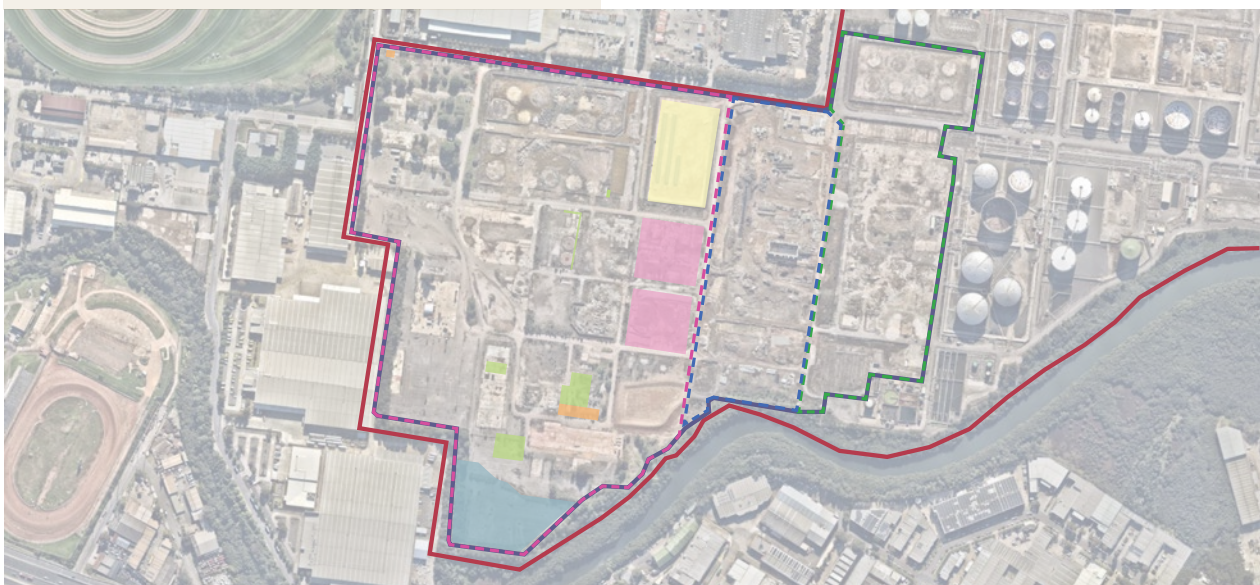
Works plan

The project is expected to take approximately three years to complete involving three stages:

STAGE 1
Preparation works and remediation
(October – December 2020) - Completed

STAGE 2
Preparation works and remediation
(August 2021 – March 2022)

- 1 **Preparation works** to set up the works area including the installation of temporary erosion and sediment controls
- 2 **Excavation and stockpiling** of approximately 6,400m³ of soils to address historical petroleum hydrocarbon impacts
- 3 **Remediation** using the following approved methods:
 - Bioremediation of soils (construction of stockpiles known as "biopiles") including an aeration system to assist in the remediation process and capture of air emissions
 - Placement of a "capping" layer and hardstand surface (bitumen or concrete) over an area in the southern portion of the site to restrict any future contact with impacted soils that will remain "in situ"
 - Using approved methods, careful and controlled excavation of any asbestos impacted soils for removal to a licensed landfill facility.



Key

Site boundary	Stage 1 Area boundary	Biopile Treatment Area
Western Area boundary	Stage 2 Area boundary	Temporary Material Handling & Storage Area
	Stage 3 Area boundary	Asbestos impacts (disposal to licenced landfill)
		Hydrocarbon impacts (onsite bioremediation)
		Mixed waste impacts (insitu management)



What to expect

We are mindful that during the remediation activities, the community may notice:

- A slight increase in the vehicular movements of our contractors within the local vicinity of the Clyde Terminal;
- Odours during excavation of soils with historical petroleum hydrocarbon impacts and the establishment of soil stockpiles (biopiles)

Work hours

Works are approved to occur between **7am** and **6pm** weekdays and **8am** to **5pm** on Saturdays.

Works will not occur on Sundays nor Public Holidays. If these times are varied, with relevant regulatory approvals, local businesses and residents will be informed.

Management Plans

To manage our works and minimise impacts to the surrounding community and environment, we have developed a number of approved management plans, which outline effective environmental controls including:

- A traffic management plan developed to minimise and manage potential impacts to local traffic.
- An air quality management plan that includes regular air monitoring and controls such as covering of stockpiles to minimise odours.
- Erosion and sediment controls to manage any surface water runoff as well as effective dust suppression.
- All works involving asbestos will be undertaken by a licenced asbestos contractor in accordance with the SafeWork NSW Code of Practice.



How to contact us

If you have any questions about the Clyde Terminal Remediation Project, you can contact us as follows:



Clyde and Parramatta Terminals 24 hour line (including complaints): **02 9897 8704**

communityrelations@vivaenergy.com.au

Find out more



vivaenergy.com.au/operations/clyde/west-area-remediation-project/western-area-remediation-project