

Clyde Terminal Community Update



Clyde Terminal Western Area Remediation Project (WARP)

We previously informed you about the proposed environmental remediation works for the Western Area of the Clyde Terminal to ensure this land meets the current standards for Commercial / Industrial land use.

Viva Energy received development consent from the Department of Planning, Industry and Environment (DPIE) in early May 2020 to undertake these works.

Works plan

The project is expected to take approximately three years to complete involving three stages. Each stage area is shown on the map below.

STAGE 1

Preparation and remediation works

(October – December 2020)

1

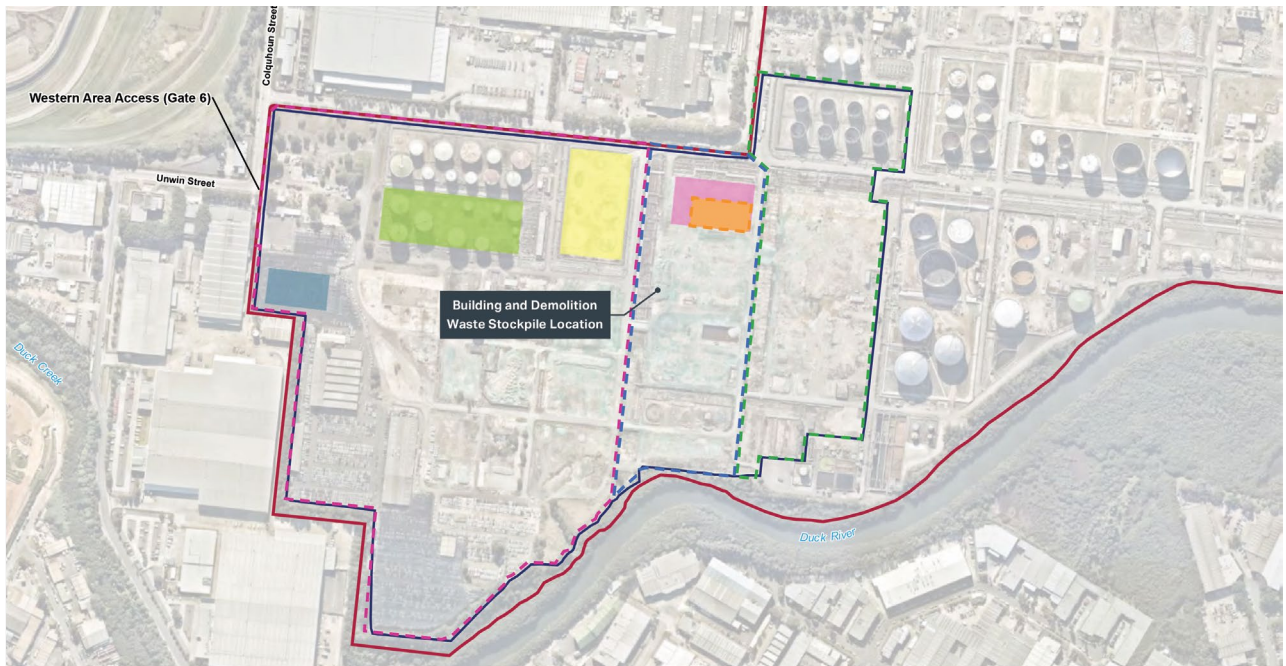
Preparation works to set up the works area including the installation of temporary erosion and sediment controls;

2

Excavation and stockpiling of approximately 2,000m³ of soils to address historical petroleum hydrocarbon impacts;

3

Remediation of the soils using bioremediation (construction of stockpiles known as “biopiles”) including an aeration system to assist in the remediation process and capture air emissions.



Key

- Site boundary
- Western Area boundary
- Stage 1 Remediation Extent (AEC-9)
- Stage 1 Area boundary
- Stage 2 Area boundary
- Stage 3 Area boundary
- Biopile Treatment Area
- Temporary Material Handling & Storage Area
- Surplus/Treated Soils Stockpiling Area
- Worker Carpark Area



What to expect

We are mindful that during the remediation activities, the community may notice:

- A slight increase in the vehicular movements of our contractors within the local vicinity of the Clyde Terminal;
- Odours during excavation of soils with historical petroleum hydrocarbon impacts and the establishment of soil stockpiles (biopiles).

Work hours

Works are approved to occur between **7am** and **6 pm** weekdays and **8am** to **5pm** on Saturdays.

Works will not occur on Sundays nor Public Holidays. If these times are varied, with relevant regulatory approvals, local businesses and residents will be informed.

Management plans

To manage our works and minimise impacts to the surrounding community and environment, we have developed a number of approved management plans, which outline effective environmental controls including:

- A traffic management plan developed to minimise and manage potential impacts to local traffic; and,
- Covering the stockpiled soils to minimise odours and testing at regular intervals to assess the effectiveness and progress of the remediation works.



How to contact us

If you have any questions about the Clyde Terminal Remediation Project, you can contact us as follows:



Clyde and Parramatta Terminals 24 hour line (including complaints): **02 9897 8704**

communityrelations@vivaenergy.com.au

Find out more

Read more information about the Clyde Terminal Western Area Remediation Project at:



www.vivaenergy.com.au/operations/clyde/west-area-remediation-project/western-area-remediation-project